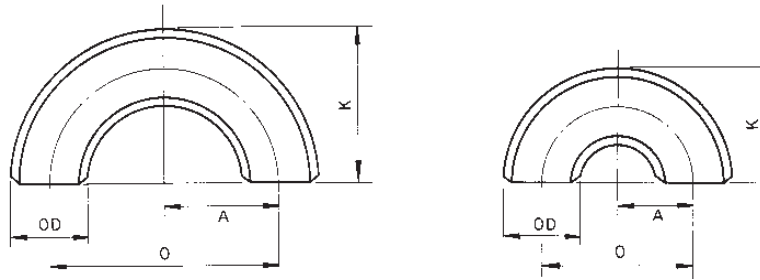


ASME B16.9 B16.28

\*Standard (mm)

Nominal Pipe Size (NPS)	Outside Diameter at Bevel OD	Center-to-End			
		Long Radius Elbow		Short Radius Elbow	
		90 Deg. A	45 Deg. B	90 Deg. A	45 Deg. * B
1/2	21.3	38.1	15.7	—	—
3/4	26.7	38.1	19.0	—	—
1	33.4	38.1	22.4	25.4	—
1-1/4	42.2	47.8	25.4	31.8	—
1-1/2	48.3	57.2	28.4	38.1	—
2	60.3	76.2	35.0	50.8	—
2-1/2	73.0	95.2	44.4	63.5	—
3	88.9	114.3	50.8	76.2	31.6
3-1/2	101.6	113.4	57.2	88.9	36.8
4	114.3	152.4	63.5	101.6	42.1
5	141.3	190.5	79.2	127.0	52.6
6	168.3	228.6	95.2	152.4	63.4
8	219.1	304.8	127.0	203.2	84.2
10	273.1	381.0	158.8	254.0	105.2
12	323.9	457.2	190.5	304.8	126.3
14	355.6	533.4	222.2	355.6	147.3
16	406.4	609.6	254.0	406.4	168.3
18	457.2	685.8	285.8	457.2	189.4
20	508.0	762.0	317.5	508.0	210.4
22	558.8	838.2	342.9	558.8	231.5
24	609.6	914.4	381.0	609.6	252.5
26	660.4	990.6	406.4	660.4*	273.5
28	711.2	1066.8	438.2	711.2*	294.6
30	762.0	1143.0	469.9	762.0*	315.6
32	812.8	1219.2	501.6	812.8*	378.1
34	863.6	1295.4	533.4	863.6*	357.7
36	914.4	1371.6	565.2	914.4*	378.8
38	965.2	1447.8	599.9	—	—
40	1016.0	1524.0	632.0	1016.0*	420.8
42	1066.8	1600.2	660.4	1066.8*	441.9
44	1117.6	1676.4	695.4	1117.6*	462.9
46	1168.4	1752.6	726.9	—	—
48	1219.2	1828.8	759.0	1219.2*	505.0
52*	1320.8	—	—	1320.8	547.1
54*	1371.6	2057.4	852.2	1371.6	568.1
56*	1422.4	2133.6	883.8	1422.4	589.2
60*	1524.0	2286.0	946.9	1524.0	631.3
66*	1676.4	2514.6	1041.6	—	—
72*	1828.8	2743.2	1262.5	—	—
80*	2032.0	—	—	2032.0	—



ASME B16.9  
ASME B16.28 (mm)

Nominal Pipe Size (NPS)	Outside Diameter at Bevel OD	Long Radius		Short Radius	
		Center-to-Center O	Back-to-Face K	Center-to-Center O	Back-to-Face K
1/2	21.3	76.2	47.8	—	—
3/4	26.7	76.2	50.8	—	—
1	33.4	76.2	55.6	50.8	41.1
1-1/4	42.2	95.2	69.8	63.5	52.3
1-1/2	48.3	114.3	82.6	76.2	62.0
2	60.3	152.4	106.4	101.6	81.0
2-1/2	73.0	190.5	131.8	127.0	100.1
3	88.9	228.6	158.8	152.4	120.7
3-1/2	101.6	266.7	184.2	177.8	139.7
4	114.3	304.8	209.6	203.2	158.8
5	141.3	381.0	261.9	254.0	196.9
6	168.3	457.2	312.7	304.8	236.5
8	219.1	609.6	414.3	406.4	312.7
10	273.1	762.0	517.6	508.0	390.7